

Spike's Object Activity

#SpikeDinosAdventures

Theme; Anglo Saxons



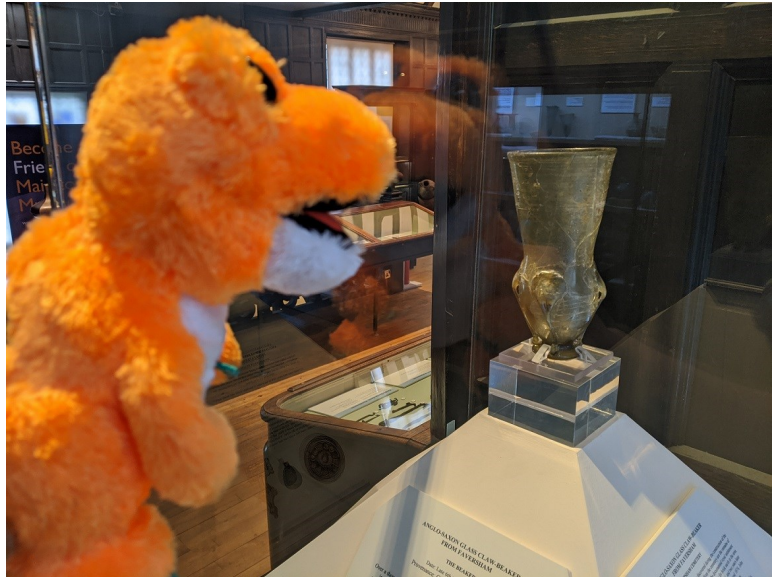
Anglo Saxons - Glass Claw Beaker

Spike spotted this glass beaker when he was looking over the balcony above last week. So today he's looking more closely at it. Here's what he found out;

This is a glass claw beaker found in a cemetery in Faversham. The claw part of the name describes the shape of the bottom of the glass. Although it looks grey it's actually an olive green colour. If you look really closely you

will be able to see that it has been repaired. It looks like it had broken into a lot of pieces!

Repairing glass and pottery is a bit like putting a jigsaw together. You have to lay out all the pieces and look for the edges that go together. It can be quite tricky to do as the edges are often straight—not like jigsaw with little notches and bobbles to fit the pieces together.



Activity; Jigsaws are good at helping your wellbeing by helping you develop your concentration. You may have completed a jigsaw that you are proud of completing. It might have been 6 pieces, 25 pieces, 50 pieces, 100 pieces or more.

We have created a special jigsaw on the next page for you to do. Colour it in first then stick it onto card and cut it into pieces. Then have a go at re-making it.

There are also two other puzzles of objects in the museum.

Spike's Jigsaw

Activity 1

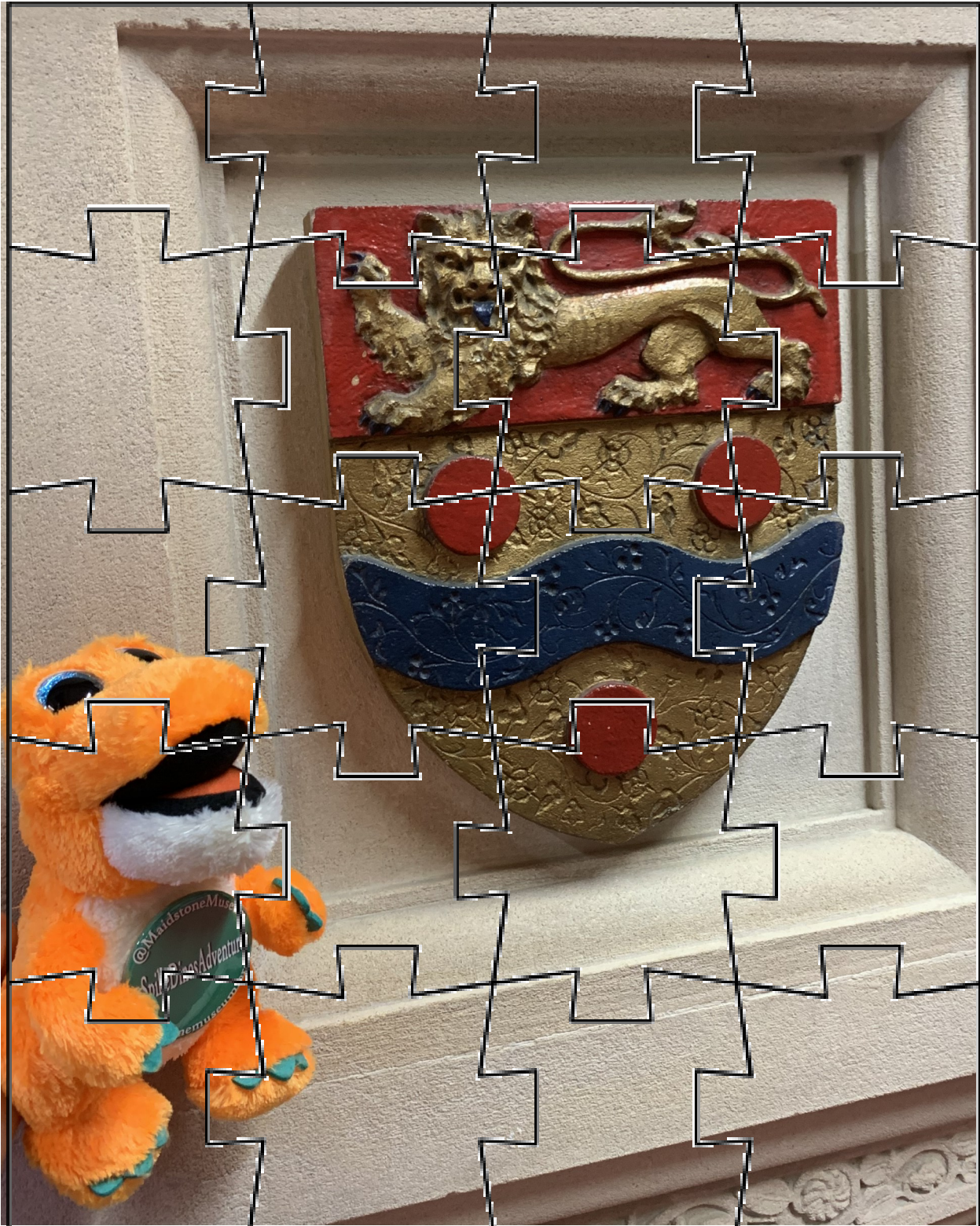
#SpikeDinosAdventures



Spike's Jigsaw

Activity 1

#SpikeDinosAdventures



Spike's Jigsaw Activity 2

#SpikeDinosAdventures

